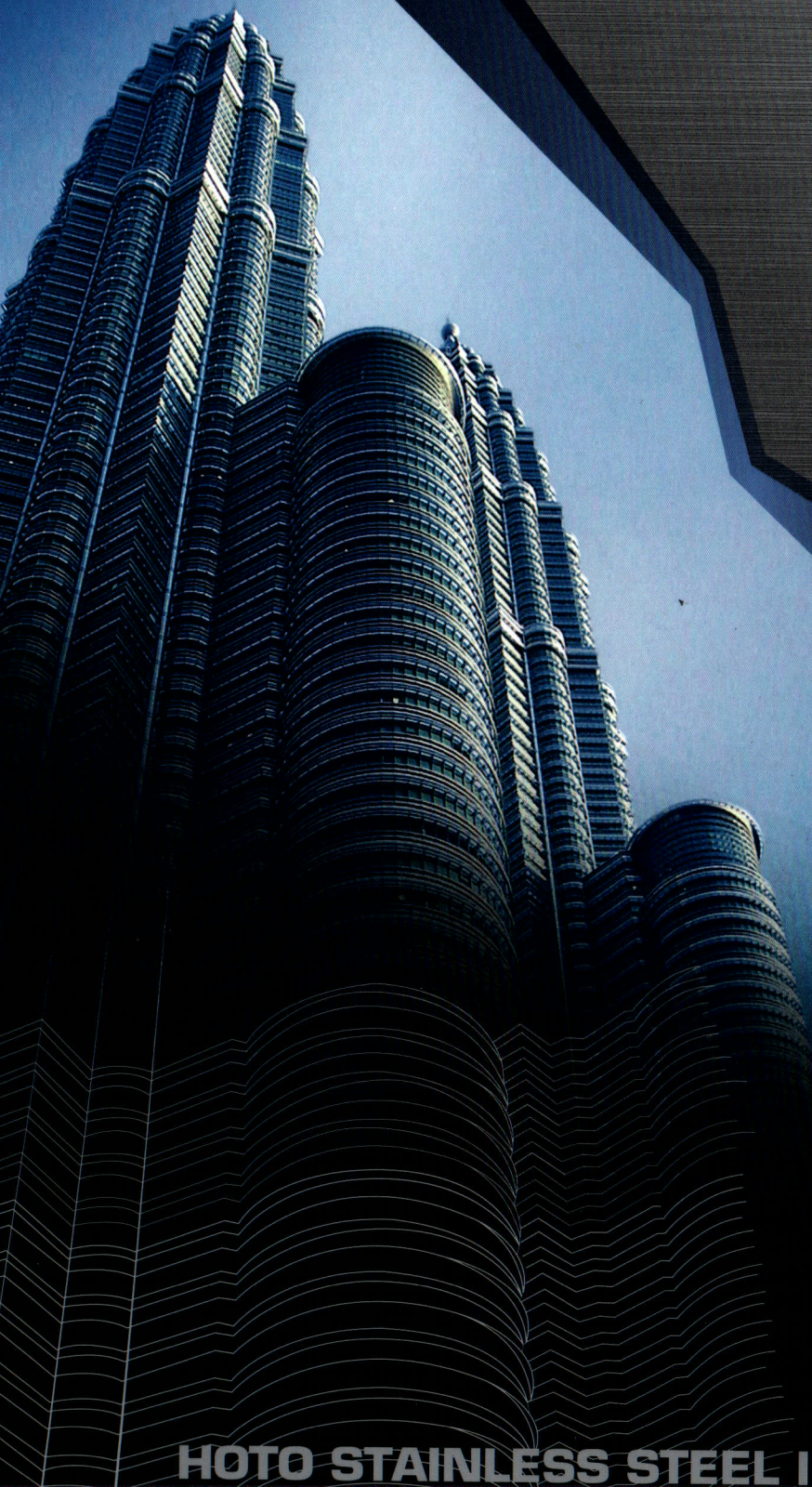


**HOTO<sup>TM</sup>**

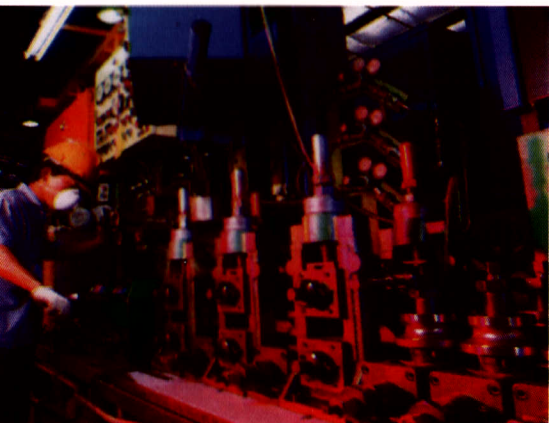


**HOTO STAINLESS STEEL INDUSTRIES SDN BHD**



# HOTO STAINLESS STEEL

## ADVANCED MANUFACTURING FACILITIES



HOTO employs the use of the most advanced technology in our operations to ensure products of the highest quality and standards always.



Our tube forming and polishing machines are the latest, fully automated high speed plants combining the best of Japanese, French and Taiwanese technologies.

## QUALITY CONTROL

Over the years, HOTO has built an enviable reputation for quality and customer satisfaction. The key to attaining this objective has always been our incorporation of a "TOTAL QUALITY MANAGEMENT" approach in all areas of operation.



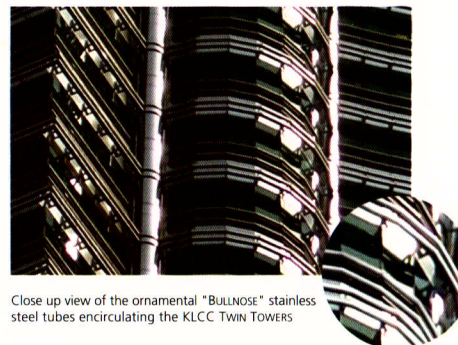
Implemented through a comprehensive quality management system, it comes complete with standard-operating procedures that ensure every aspect of activities and services are carried out according to the highest standards.



As such, every individual contributes toward meeting quality standards in his or her area of work, supported by quality control personnel at all levels.

## PRODUCT APPLICATION

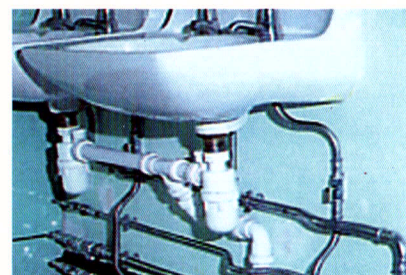
HOTO's high quality stainless steel ornamental tubes and exhaust pipes are highly sought after by various industries for a diverse range of applications.



Close up view of the ornamental "BULLNOSE" stainless steel tubes encircling the KLCC TWIN TOWERS

### Architectural & Decorative

- Gates & Grilles ▪ Handrails ▪ Space Frames
- Sunshades ▪ Canopies ▪ Shop Fittings ▪
- Shower & Towel Rails ▪ Display Stands ▪
- Bus & Rail Carriage Frames ▪ Tubular Furniture



### Hygiene & Sanitary

- Modern Plumbing Systems ▪
- Commercial Kitchen Installations ▪
- Hospital Equipment ▪



### Corrosion Resistance & Engineering Applications

- Marine Rails and Equipment ▪
- Swimming Pool Equipment ▪
- Automotive Accessories ▪
- Exhaust Pipes ▪

## QUALITY POLICY

"We are committed to continually improving our Quality Management System and providing our customers with the highest standards of product quality and service at competitive prices."



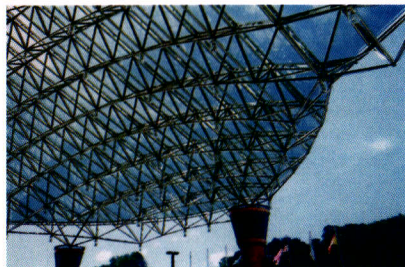


## STOCKISTS NATIONWIDE

HOTO products are available throughout Peninsular and East Malaysia through a wide network of stockists and authorised representatives. This is to ensure the demands of industry growth and expansion within the nation are constantly met on a highly professional level.



We are also known for product delivery efficiency and actively partnering our clients in facilitating all relevant aspects of their operations.



## EXPORT MARKET

Well established on the local scene, HOTO has also made major inroads into international markets. Our products are well accepted globally with high demand from emerging as well as developed nations.

Supported by excellent export facilities, including efficient warehousing and an excellent distribution network, our products are currently exported to every continent of the world.

## PROJECTS UNDERTAKEN

Today, HOTO products are widely used throughout Malaysia in every aspect of industry and community life. We have also been an integral part of many prestigious building projects that have demanded stainless steel tubes of the highest quality.



This includes the world acclaimed KLCC TWIN TOWERS project in Kuala Lumpur. With more than 1,000 metric tonnes of stainless steel tubes fabricated by HOTO clad around the building from the ground floor right up to the pinnacle, the KLCC TWIN TOWERS is without a doubt, one of the most unique and spectacular buildings ever constructed in modern times. With compound angles cut and tight tolerance, the ornamental "bullnose" stainless steel tubes were also a major challenge to our fabrication abilities. This project is a clear testimony of HOTO's skill and expertise in the field of stainless steel fabrication.



Among many other outstanding projects, we have also had the privilege to be involved in the PUTRA LRT STATIONS and the KLIA SHORT TERM PARKING LOT.







## EXCELLENCE BUILT ON STAINLESS STEEL

Established in January 1994, HOTO STAINLESS STEEL INDUSTRIES SDN BHD is Malaysia's foremost manufacturer of stainless steel ornamental tubes. A name that has come to stand for quality and excellence through the years, HOTO is an abbreviation of the Japanese word "HOSHO TOKYUHN" which means "assurance of excellent quality". This is a reflection of the Company's commitment in producing quality stainless steel tubes that meet and often exceed international standards and specifications.

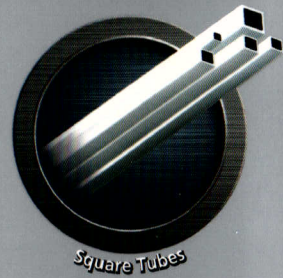
Currently, HOTO produces a full range of round, square and rectangular stainless steel ornamental tubes, pattern tubes, short bends, water and exhaust pipes for a variety of architectural, engineering or decorative applications. At HOTO, we believe in working closely with our clients to provide them with products and services of unsurpassed quality. It is this high level of commitment to go beyond expectations that has won the trust and loyalty of our customers at home and abroad. We are also proud to be accredited with the MS ISO 9001:2000 QUALITY MANAGEMENT SYSTEM by SIRIM QAS INTERNATIONAL SDN BHD.



### PRODUCT RANGE



Round Tubes



Square Tubes



Rectangular Tubes



Pattern Tubes



90 Degree Short Bend Elbows



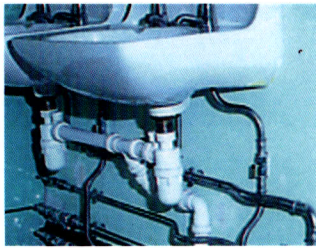
Exhaust Tubes



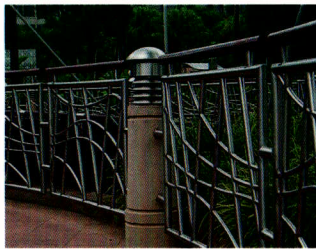




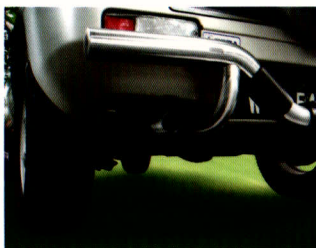
ARCHITECTURAL



PLUMBING SYSTEMS



ORNAMENTAL RAILINGS



AUTOMOBILE



HOTO STAINLESS STEEL INDUSTRIES SDN BHD (285737-T)

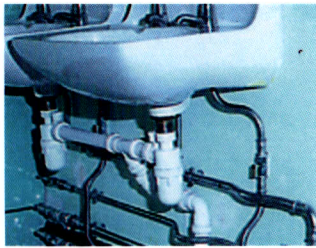


CERTIFIED TO ISO 9001:2008  
CERT. NO.: AR 1139

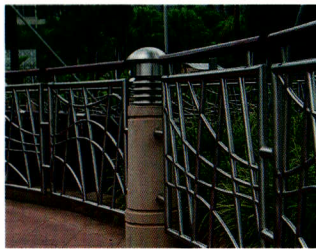




ARCHITECTURAL



PLUMBING SYSTEMS



ORNAMENTAL RAILINGS



AUTOMOBILE



**HOTO**<sup>TM</sup>

**HOTO STAINLESS STEEL INDUSTRIES SDN BHD** (285737-T)



CERTIFIED TO ISO 9001:2008  
CERT. NO.: AR 1139